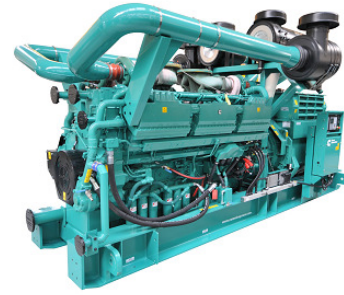


Diesel Generator Set QSK78 Series Engine



> Specification sheet

2750 kVA – 3000 kVA 50Hz



Our energy working for you.™

Description

This Cummins® Power Generation commercial generator set is a fully integrated power generation system, providing optimum performance, reliability, and versatility for stationary standby, prime power, and continuous duty applications.



This generator set is designed in facilities certified to ISO9001 and manufactured in facilities certified to ISO9001 or ISO9002.

ISO 8528

This generator set has been designed to comply with ISO8528 regulation



This generator set is available with CE certification.

Features

Cummins® Heavy-Duty Engine - Rugged 4-cycle industrial diesel delivers reliable power, low emissions and fast response to load changes.

Permanent Magnet Generator (PMG) - Offers enhanced motor starting and fault clearing short circuit capability.

Alternator - Several alternator sizes offer selectable motor starting capability with low reactance 2/3 pitch windings; low waveform distortion with non-linear loads, fault clearing short-circuits capability, and class F or H insulation.

Control system - Standard PowerCommand® electronic control provides total system integration including remote start/stop, precise frequency and voltage regulation, alarm and status message display, AmpSentry protection, output metering, auto-shutdown

Cooling system - Optional remote mounted horizontal cooling system, designed and tested for rated ambient temperatures, offers maximum flexibility for facility design requirements.

Warranty - Backed by a comprehensive warranty and worldwide distributor network.

| | Standby Rating | Prime Rating | Continuous Rating | Emissions Compliance | | |
|----------|------------------|------------------|-------------------|----------------------|------------|-----------------|
| Model | 50Hz kVA (kW) | 50Hz kVA (kW) | 50Hz kVA (kW) | TA LUFT | Controller | Datasheet |
| C2750 D5 | 2750 (2200) | 2500 (2000) | 2250 (1800) | 4g TA LUFT | 3.3 | DS335-CPGK-RevA |
| C3000 D5 | 3000 (2400)* | 2750 (2200) | 2475 (1980) | 4g TA LUFT | 3.3 | DS352-CPGK-RevA |

*Note: Rating is with a Remote Cooled Configuration

Our energy working for you.™

www.cumminspower.com

© 2010 Cummins Power Generation Inc. All rights reserved. Cummins Power Generation and Cummins are registered trademarks of Cummins Inc. "Our energy working for you." is a trademark of Cummins Power Generation. Specifications are subject to change without notice. SS27-CPGK-RevA (05/10).



Generator Set Specifications

| | |
|---|--|
| Governor Regulation | ISO8528G3 |
| Steady State Voltage Regulation, No Load to Full Load | ± 0.25% |
| Steady State Frequency Variation | ± 0.25% |
| Frequency Regulation | Isochronous |
| EMC Compatibility | Radiated Emissions to BSEN61000-6.3 Conducted Immunity to BSEN61000-6.2 |

Engine Specifications

| | |
|-----------------------------|--|
| Design | 4 cycle, V, Turbo Charged and Low Temperature After cooled |
| Bore | 170 |
| Stroke | 190 |
| Displacement | 77.6 liter (4735 in. ³) |
| Cylinder Block | Cast iron, 18 cylinder |
| Battery Capacity | 1400 A |
| Battery Charging Alternator | 55 amps |
| Starting Voltage | 24 volt, negative ground |
| Fuel System | Direct injection: number 2 diesel fuel, fuel filter, automatic electric fuel shutoff |
| Fuel Filter | Triple element, 10 micron filtration, spin-on fuel filter with water separator |
| Air Cleaner Type | Dry replaceable element |
| Lube Oil Filter Type(s) | Six spin-on, combination full flow and bypass filters |
| Cooling System | 104°F (40°C) ambient |

Alternator Specifications

| | |
|---------------------------------------|--|
| Design | Brushless 4 pole, drip proof revolving field |
| Stator | 2/3 pitch |
| Rotor | 2 bearing, flexible coupling |
| Insulation System | Class H on low and medium voltage, Class F on high voltage |
| Standard Temperature Rise | 150°C Standby |
| Exciter Type | PMG (Permanent Magnet Generator) |
| Phase Rotation | A (U), B (V), C (W) |
| Alternator Cooling | Direct drive centrifugal blower fan |
| AC Waveform Total Harmonic Distortion | No load <1.5 %. Non distorting balanced linear load <3 % |
| Telephone Influence Factor (TIF) | <50 per NEMA MG1-22.43 |
| Telephone Harmonic Factor (THF) | <2% |

Available Voltages

| 50Hz Line – Neutral / Line – Line | |
|-----------------------------------|-------------|
| •220/380 | •1905/3300 |
| •230/400 | •3810/6600 |
| •240/415 | •6350/11000 |
| •254/440 | |

Generator Set Options

Engine

- Water jacket heater 220/240 V
- Centinel
- Eliminator
- Pre-lube system

Alternator

- Alternator heater
- High humidity isolation
- Exciter voltage regulator (PMG)
- Temperature sensor - RTDs,
- Temperature sensor – alternator bearing RTD
- Differential current transformers
- Exciter voltage regulator (PMG)
- 80C – 150C Temperature Rise

Generator Set

- Vibration Isolators
- Batteries
- Battery Charger

Control Panel

- PowerCommand 3.3
- Paralleling
- Multiple language support
- 240 V control anti-condensation

Exhaust System

- Industrial silencer
- Residential silencer
- In-Line or Side Entry Options
- Accessories

Cooling System

- Antifreeze 50/50 (Ethylene glycol)
- Radiator, 40 °C ambient
- Radiator, 50 °C ambient
- Remote Cooling
- Fuel Cooler, 40 °C ambient
- Fuel Cooler, 50 °C ambient

Warranty

- 2 years warranty
- 5 years warranty
- 10 year major component warranty

*Note: Some options may not be available on all models – consult factory for availability.

Our energy working for you.™

www.cumminspower.com

© 2010 Cummins Power Generation Inc. All rights reserved. Cummins Power Generation and Cummins are registered trademarks of Cummins Inc. "Our energy working for you." is a trademark of Cummins Power Generation. Specifications are subject to change without notice. SS27-CPGK-RevA (05/10).



PowerCommand® 3.3 – Control System



Control system

The PowerCommand® control system is an integrated microprocessor based generator set control system providing voltage regulation, engine protection, alternator protection, operator interface and isochronous governing.

AmpSentry – Includes integral AmpSentry protection, which provides a full range of alternator protection functions that are matched to the alternator provided.

Power management – Control function provides battery monitoring and testing features and smart starting control system.

Advanced control methodology – Three phase sensing, full wave rectified voltage regulation, with a PWM output for stable operation with all load types.

Communications interface – Control comes standard with PCCNet and Modbus interface.

Regulation compliant – Prototype tested: UL, CSA and CE compliant.

Service - InPower™ PC-based service tool available for detailed diagnostics, setup, data logging and fault simulation.

Reliable design – The control system is designed for reliable operation in harsh environment.

Multi-language support

Operator panel features

Operator panel features – The operator panel, in addition to the alternator, displays the Utility/AC Bus data.

Operator/display functions

- 320 x 240 pixels graphic LED backlight LCD
- Auto, manual, start, stop, fault reset and lamp test/panel lamp switches
- Alpha-numeric display with pushbuttons
- LED lamps indicating genset running, remote start, not in auto, common shutdown, common warning, manual run mode, auto mode and stop

Paralleling control functions

- Digital frequency synchronization and voltage matching
- Isochronous kW and kvar load sharing controls
- Droop kW and kvar control
- Sync check
- Extended paralleling (Peak Shave/Base Load)
- Digital power transfer control (AMF) provides load transfer operation in open or closed transition or soft (ramping) transfer mode

Alternator data

- Line-to-neutral and line-to-line AC volts
- 3-phase AC current
- Frequency
- kW, kvar, power factor kVA (three phase and total)

Engine data

- DC voltage
- Engine speed
- Lube oil pressure and temperature
- Coolant temperature
- Comprehensive FAE data (where applicable)

Other data

- Genset model data
- Start attempts, starts, running hours, kW hours
- Load profile (operating hours at % load in 5% increments)
- Fault history
- Data logging and fault simulation (requires InPower)

Standard control functions

Digital governing (optional)

- Integrated digital electronic isochronous governor
- Temperature dynamic governing

Digital voltage regulation

- Integrated digital electronic voltage regulator
- 3-phase, 4-wire line-to-line sensing
- Configurable torque matching

AmpSentry AC protection

- AmpSentry protective relay
- Over current and short circuit shutdown
- Over current warning
- Single and three phase fault regulation
- Over and under voltage shutdown
- Over and under frequency shutdown
- Overload warning with alarm contact
- Reverse power and reverse var shutdown
- Field overload

Engine protection

- Battery voltage monitoring, protection and testing
- Over speed shutdown
- Low oil pressure warning and shutdown
- High coolant temperature warning and shutdown
- Low coolant level warning or shutdown
- Low coolant temperature warning
- Fail to start (over crank) shutdown
- Fail to crank shutdown
- Cranking lockout
- Sensor failure indication
- Low fuel level warning or shutdown
- Fuel-in-rupture-basin warning or shutdown
- Full authority electronic engine protection

Control functions

- Time delay start and cool down
- Real time clock for fault and event time stamping
- Exerciser clock and time of day start/stop
- Data logging
- Cycle cranking
- Load shed
- Configurable inputs and outputs (4)
- Remote emergency stop

Options

- Auxiliary output relays (2)

Our energy working for you.™

www.cumminspower.com

© 2010 Cummins Power Generation Inc. All rights reserved. Cummins Power Generation and Cummins are registered trademarks of Cummins Inc. "Our energy working for you." is a trademark of Cummins Power Generation. Specifications are subject to change without notice. SS27-CPGK-RevA (05/10).



Ratings Definitions

Emergency Standby Power (ESP):

Applicable for supplying power to varying electrical load for the duration of power interruption of a reliable utility source. Emergency Standby Power (ESP) is in accordance with ISO 8528. Fuel Stop power in accordance with ISO 3046, AS 2789, DIN 6271 and BS 5514.

Limited-Time running Power (LTP):

Applicable for supplying power to a constant electrical load for limited hours. Limited Time Running Power (LTP) is in accordance with ISO 8528.

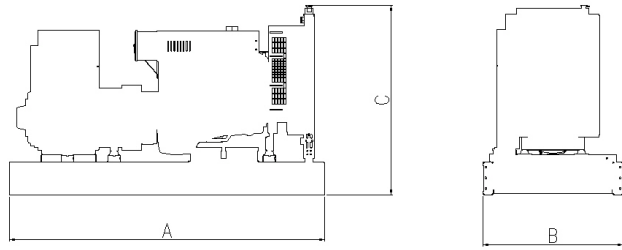
Prime Power (PRP):

Applicable for supplying power to varying electrical load for unlimited hours. Prime Power (PRP) is in accordance with ISO 8528. Ten percent overload capability is available in accordance with ISO 3046, AS 2789, DIN 6271 and BS 5514.

Base Load (Continuous) Power (COP):

Applicable for supplying power continuously to a constant electrical load for unlimited hours. Continuous Power (COP) in accordance with ISO 8528, ISO 3046, AS 2789, DIN 6271 and BS 5514.

Open Set



This outline drawing is to provide representative configuration details for Model series only.

See respective model data sheet for specific model outline drawing number.

Do not use for installation design.

Open Set

| Model | Dim "A" mm | Dim "B" mm | Dim "C" mm | Set weight* dry kg | Set weight* wet kg |
|----------|------------|------------|------------|--------------------|--------------------|
| C2750 D5 | 5668 | 2313 | 2300 | 19996 | 20616 |
| C3000 D5 | 5668 | 2313 | 2300 | 19996 | 20616 |

*Note: Weights represent a set with standard features. Does not include fuel. See outline drawings for weights of other configurations.

Cummins Power Generation

Europe, CIS, Middle East and Africa

Manston Park Columbus Ave.
Manston Ramsgate
Kent CT12 5BF United Kingdom
Phone 44 1843 255000
Fax 44 1843 255902

Americas

1400 73rd Avenue N.E.
Minneapolis, MN 55432 USA
Phone 763 574 5000
Fax 763 574 5298

Asia Pacific

10 Toh Guan Road #07-01
TT International Tradepark
Singapore 608838
Phone 65 6417 2388
Fax 65 6417 2399

Our energy working for you.™

www.cumminspower.com

© 2010 Cummins Power Generation Inc. All rights reserved. Cummins Power Generation and Cummins are registered trademarks of Cummins Inc. "Our energy working for you." is a trademark of Cummins Power Generation. Specifications are subject to change without notice. SS27-CPGK-RevA (05/10).

