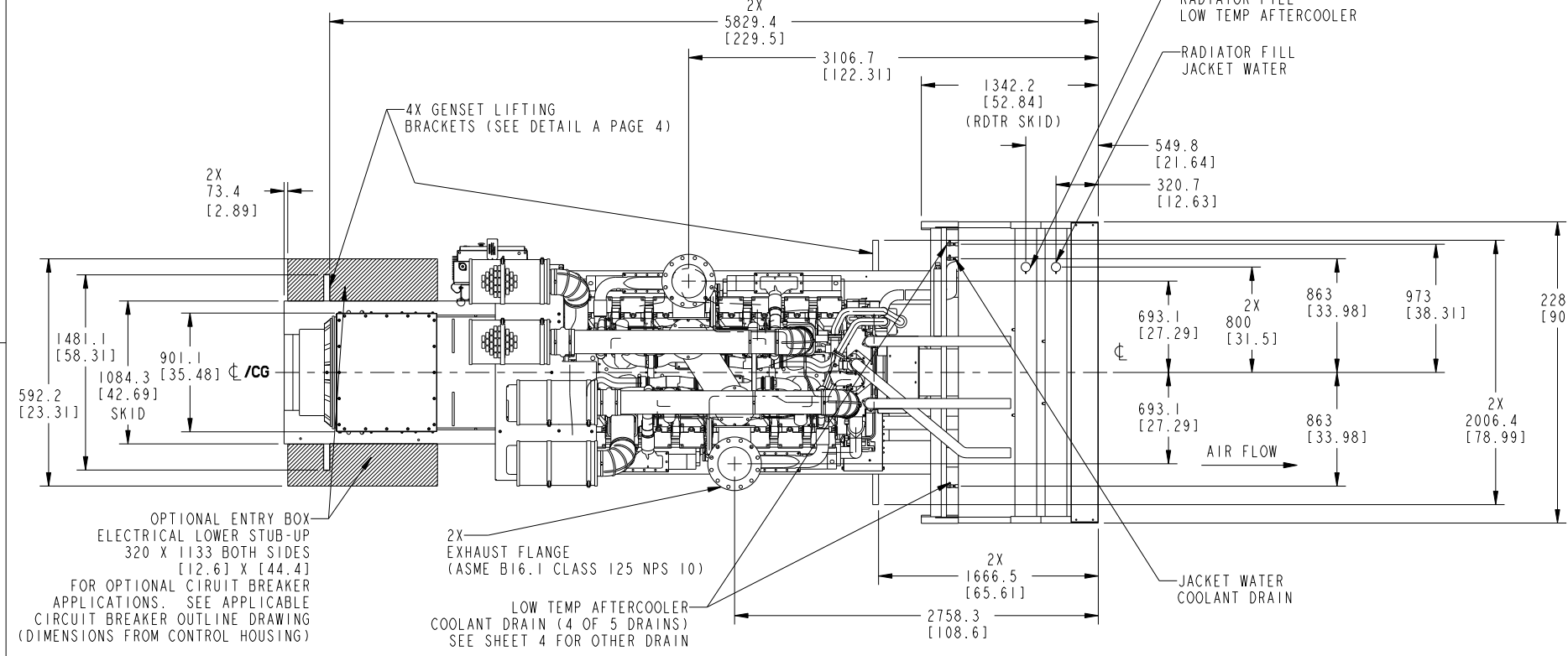


REL. NO.	LTR.	NO.	REVISION	ZONE	DR.	CHKD.	APPROVED	DATE
ECO-104057	D	1	ADD SHEET 8	-	AL	DPA	P.VAIDYA	25FEB09



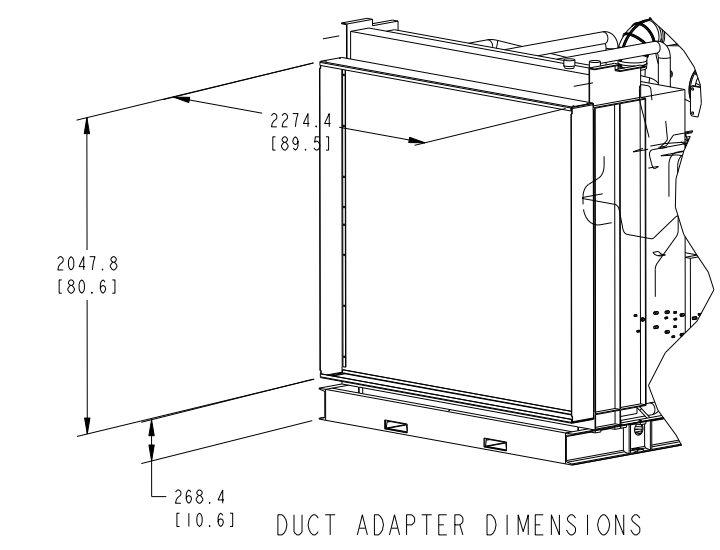
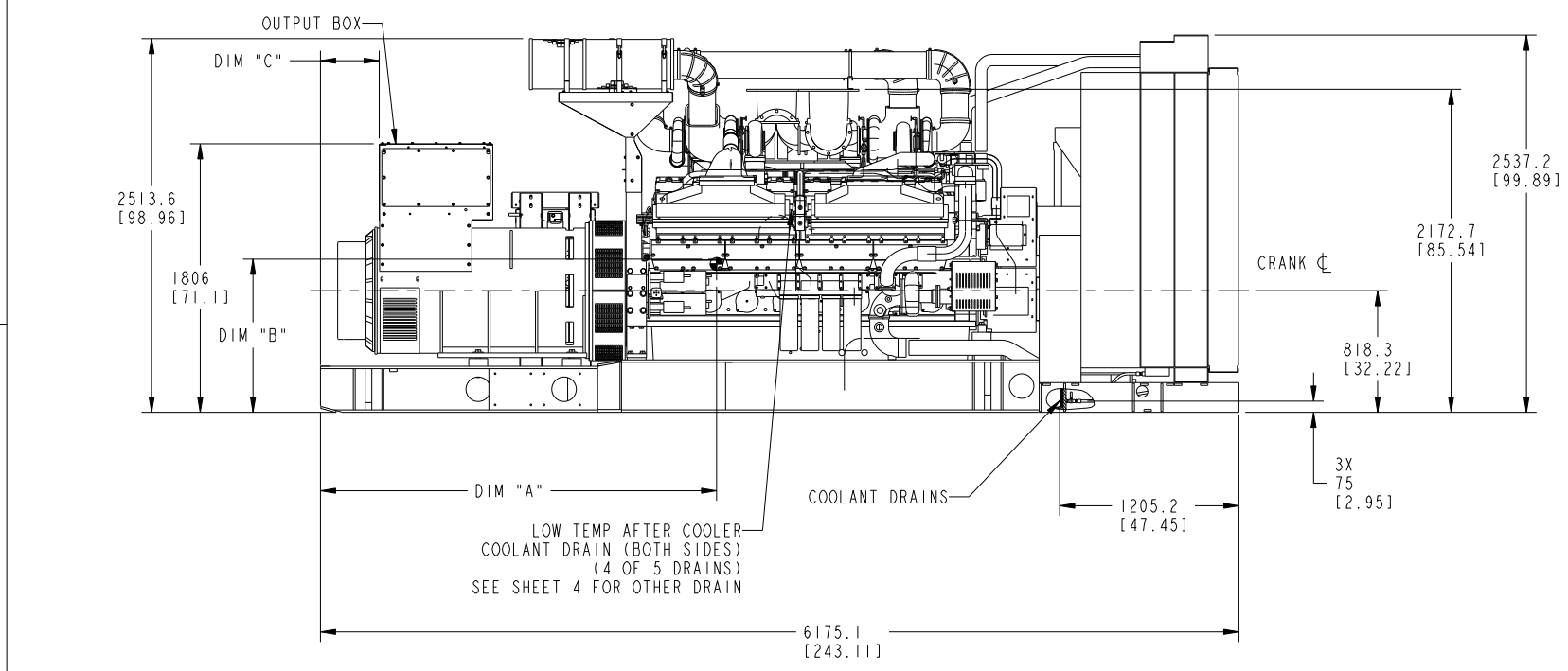
- NOTE:
1. DIMENSIONS SHOWN IN [] BRACKETS ARE INCHES.
 2. DO NOT ATTACH SOLID CONDUIT TO CONTROL BOX.
 4. GENSET SHIPPED FILLED WITH ENGINE OIL.

TABULATION OIL SUMP (69 U.S. GALLONS)

GEN. FRAME SIZE	DIM "A" C.G.	DIM "B" C.G.	DIM "C"	GENSET WEIGHT	
				KGS	LBS
P7D	3036 [119.5]	910 [35.8]	480 [18.9]	14630	32254
P7E	2999 [118.1]	908 [35.8]	480 [18.9]	14868	32779
P7F	2961 [116.6]	906 [35.7]	395 [15]	15152	33405
P7G	2931 [115.4]	905 [35.6]	395 [15]	15366	33877
MV7G	3002 [118.2]	909 [35.8]	558 [22]	14762	32545
MV7H	2954 [116.3]	907 [35.7]	558 [22]	15093	33273

TABULATION OIL SUMP (100 U.S. GALLONS)

GEN. FRAME SIZE	DIM "A" C.G.	DIM "B" C.G.	DIM "C"	GENSET WEIGHT	
				KGS	LBS
P7D	3030 [119.3]	903 [35.5]	480 [18.9]	14774	32571
P7E	2993 [117.8]	902 [35.5]	480 [18.9]	15012	33096
P7F	2956 [116.4]	900 [35.4]	395 [15]	15296	33722
P7G	2927 [115.2]	899 [35.4]	395 [15]	15510	34194
MV7G	2996 [118.0]	902 [35.5]	558 [22]	14906	32862
MV7H	2949 [116.1]	900 [35.4]	558 [22]	15236	33590



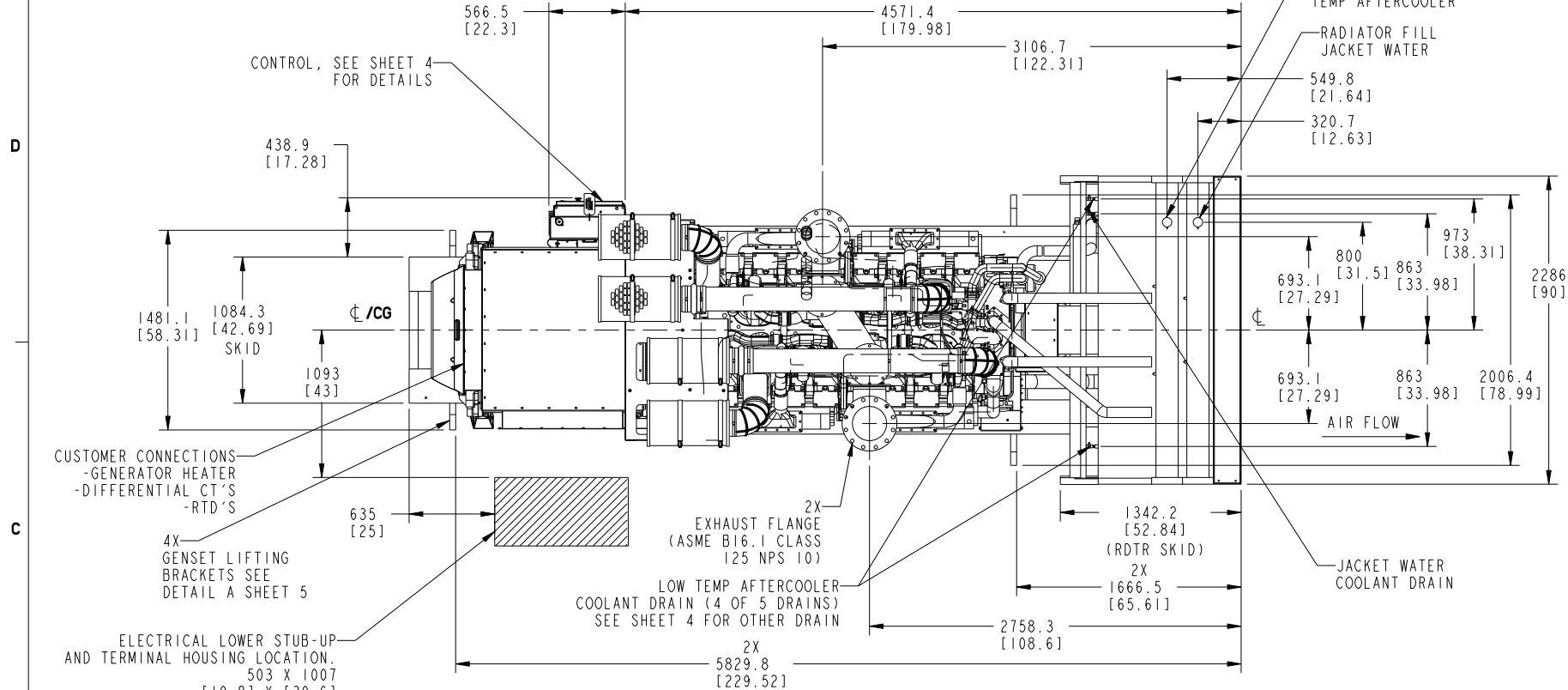
RADIATOR COOLED (40C) P7 ALTERNATOR

TOLERANCE UNLESS OTHERWISE SPECIFIED		QTY	ITEM	PART NO.	SIZE	DESCRIPTION OR MATERIAL	REV
mm	inch						
X ± 3	.X ±						
.X ± 0.8	.XX ±						
.XX ± 0.38	.XXX ±						
0.09 - 4.99	+0.15/-0.00	004-200	1.000/-0.03				
5.00 - 9.99	+0.20/-0.10	201-421	1.000/-0.04				
10.00 - 17.49	+0.25/-0.13	422-103	1.010/-0.05				
17.50 - 24.99	+0.30/-0.13	704-999	1.017/-0.05				

DR	M.T.ABEL	DATE	01-15-04
CHKD	B.HENNING	DATE	01-15-04
APPROVED	B.HENNING	DATE	01-15-04
MODEL FIRST USED ON	DQKB, KC, KD		

CUMMINS POWER GENERATION		1100 73RD AVE NE	
		MINNEAPOLIS, MINNESOTA 55432	
TITLE	GENSET_OUTLINE	SHEET	1 OF 8
SITE CODE	PGA	ENG NO.	0500_3947

REL. NO.	LTR.	NO.	REVISION	ZONE	DR.	CHKD.	APPROVED	DATE
ECO-104057	D	--	----		AL	DPA	P. VAIDYA	25FEB09

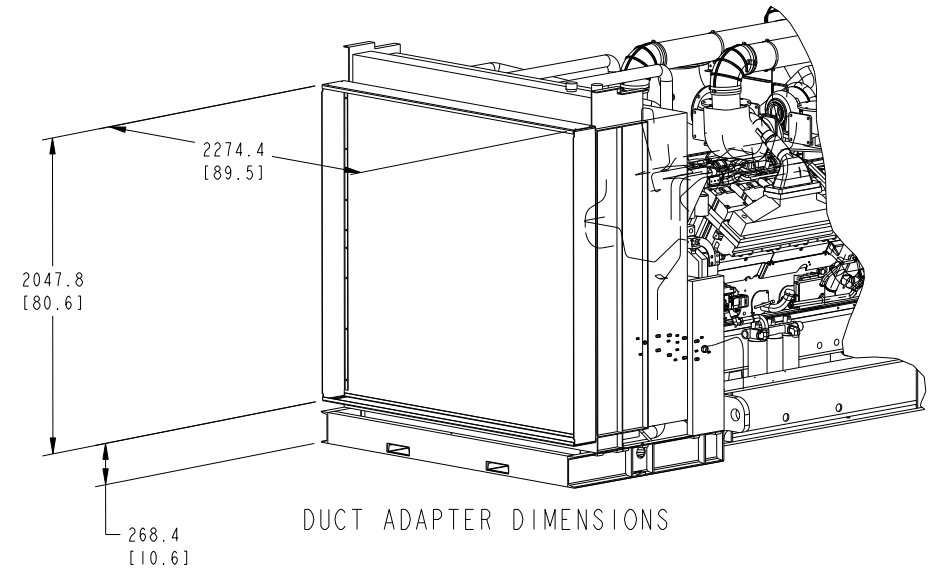
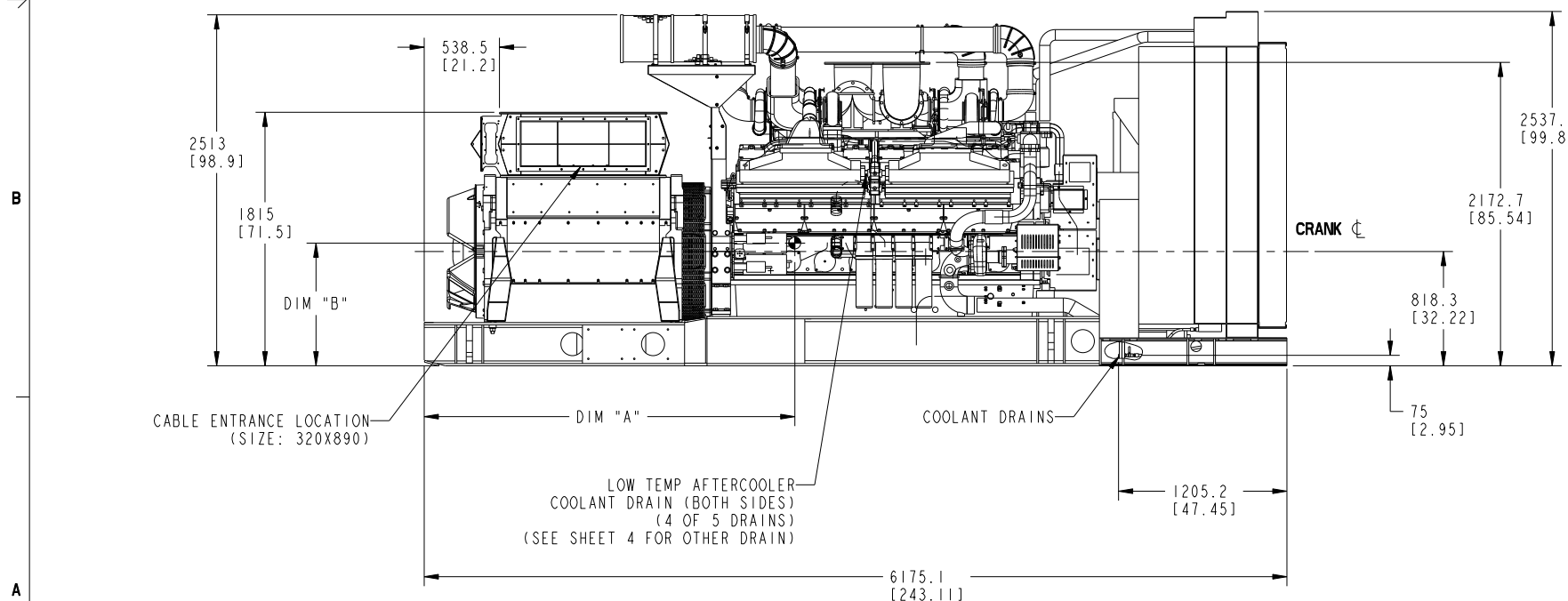


TABULATION OIL SUMP (69 U.S. GALLONS)

GEN. FRAME SIZE	DIM "A" C.G.	DIM "B" C.G.	GENSET WT W/O COOLANT	
			KGS	LBS
LVS1804RI	2786 [109.7]	918 [36.2]	16781	36995
LVS1804SI	2758 [108.6]	917 [36.1]	17029	37542
LVS1804TI	2721 [107.1]	915 [36.0]	17379	38314
MVS1804RI	2826 [111.3]	911 [35.9]	16381	36114
MVS1804SI	2797 [110.1]	910 [35.8]	16629	36660
MVS1804TI	2758 [108.6]	908 [35.7]	16979	37432
HVS1804RI	2826 [111.3]	911 [35.9]	16381	36114
HVS1804SI	2797 [110.1]	910 [35.8]	16629	36660
HVS1804TI	2758 [108.6]	908 [35.7]	16979	37432

TABULATION OIL SUMP (69 U.S. GALLONS)

GEN. FRAME SIZE	DIM "A" C.G.	DIM "B" C.G.	GENSET WT W/O COOLANT	
			KGS	LBS
LVS1804RI	2783 [109.6]	912 [35.9]	16925	37312
LVS1804SI	2756 [108.5]	911 [35.9]	17173	37859
LVS1804TI	2718 [107.0]	909 [35.8]	17523	38631
MVS1804RI	2822 [111.1]	905 [35.6]	16525	36431
MVS1804SI	2794 [110.0]	904 [35.6]	16773	36977
MVS1804TI	2755 [108.5]	902 [35.5]	17123	37749
HVS1804RI	2822 [111.1]	905 [35.6]	16525	36431
HVS1804SI	2794 [110.0]	904 [35.6]	16773	36977
HVS1804TI	2755 [108.5]	902 [35.5]	17123	37749

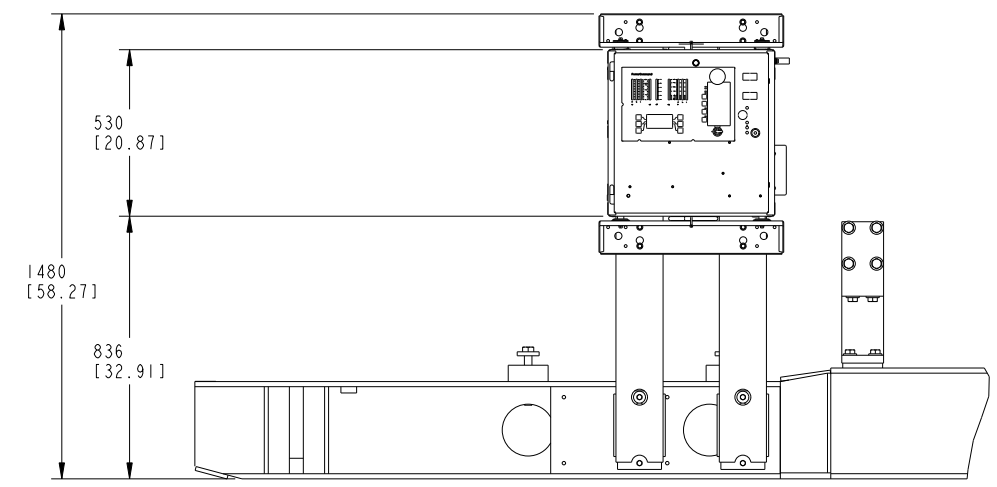
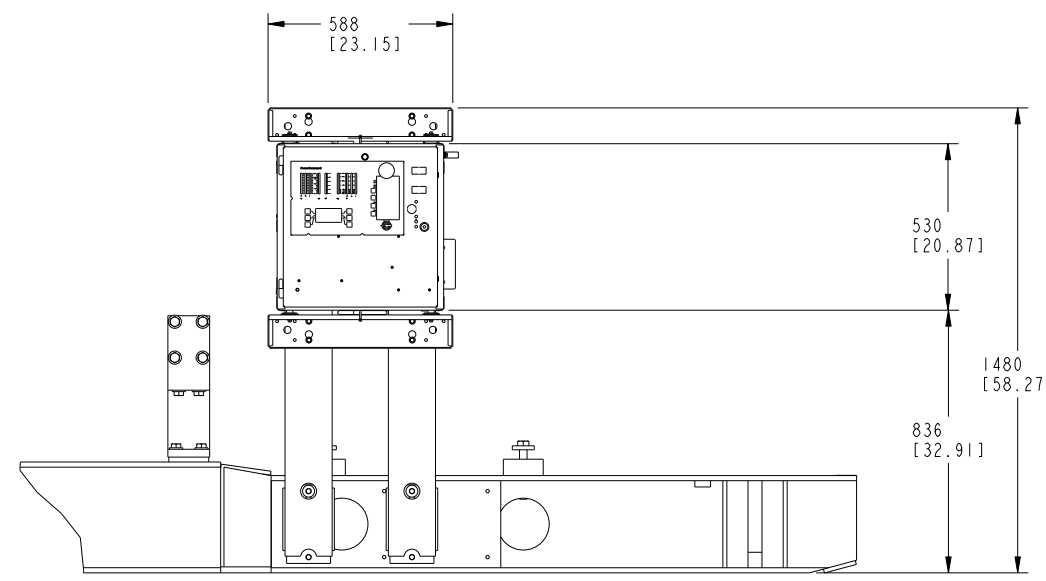
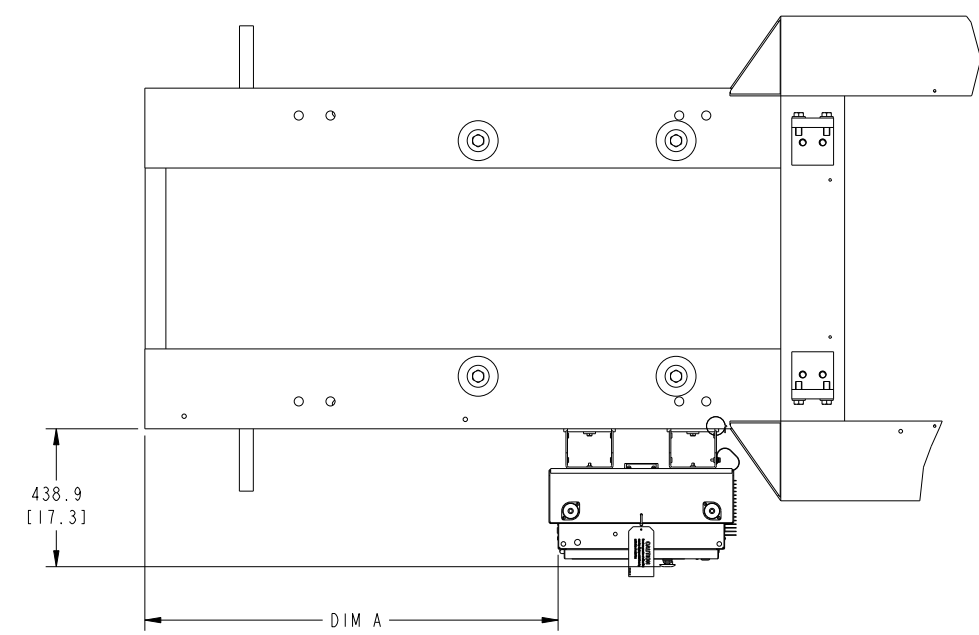
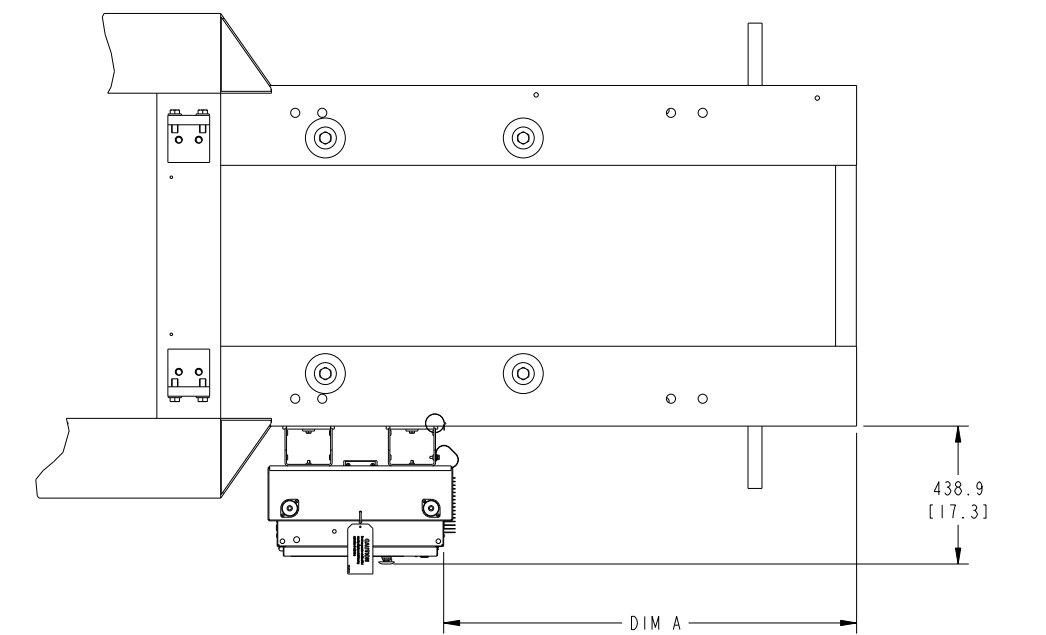


RADIATOR COOLED (40C) P80 ALTERNATOR

- NOTE:
1. DIMENSIONS SHOWN IN [] BRACKETS ARE INCHES.
 2. DO NOT ATTACH SOLID CONDUIT TO CONTROL BOX.
 4. GENSET SHIPPED FILLED WITH ENGINE OIL.

DO NOT SCALE PRINT		TOLERANCE UNLESS OTHERWISE SPECIFIED		DIM TO		ITEM PART NO		DESCRIPTION OR MATERIAL		REV DES	
		mm	Inch								
		X ± 0.3	.X ±	COPY TO		NAME		DATE		CUMMINS POWER GENERATION	
		.X ± 0.8	.XX ±	FROM		DR M.T. ABEL		01-15-04		1400 73RD AVE NE	
		.XX ± 0.38	.XXX ±	THIRD ANGLE PROJECTION		CHKR CD B. HENNING		01-15-04		MINNEAPOLIS, MINNESOTA 55432	
		0.05 - 4.99 +0.15/-0.08	004 - 200 +.001/-0.03	APPROVED B. HENNING		MFG CD		01-15-04		TITLE GENSET_OUTLINE	
		5.00 - 9.99 +0.20/-0.10	201 - 421 +.002/-0.04	THIS DOCUMENT IS THE PROPERTY OF CUMMINS POWER GENERATION. IT CONTAINS PROPRIETARY AND CONFIDENTIAL INFORMATION WHICH MUST NOT BE DISCLOSED, USED OR REPRODUCED IN ANY MANNER WITHOUT THE EXPRESS WRITTEN AUTHORIZATION OF CUMMINS POWER GENERATION OR ITS REPRESENTATIVE.		FOR INTERPRETATION MODEL FIRST USED ON		DOKB, KC, KD		SITE CODE PGA	
ANG TOL: 1.0 °		10.00 - 17.49 +0.25/-0.13	422 - 103 +.010/-0.05	DRAWN TO SCALE OF 3/64						DWG NO 0500_3947	
		17.50 - 24.99 +0.30/-0.13	704 - 999 +.012/-0.05							SHEET 2 OF 8	

REL NO	LTR NO	REVISION	ZONE	DR	CHKD	APPROVED	DATE
ECO-104057	D	---	-	AL	DPAP	P.VAIDYA	25FEB09



H609

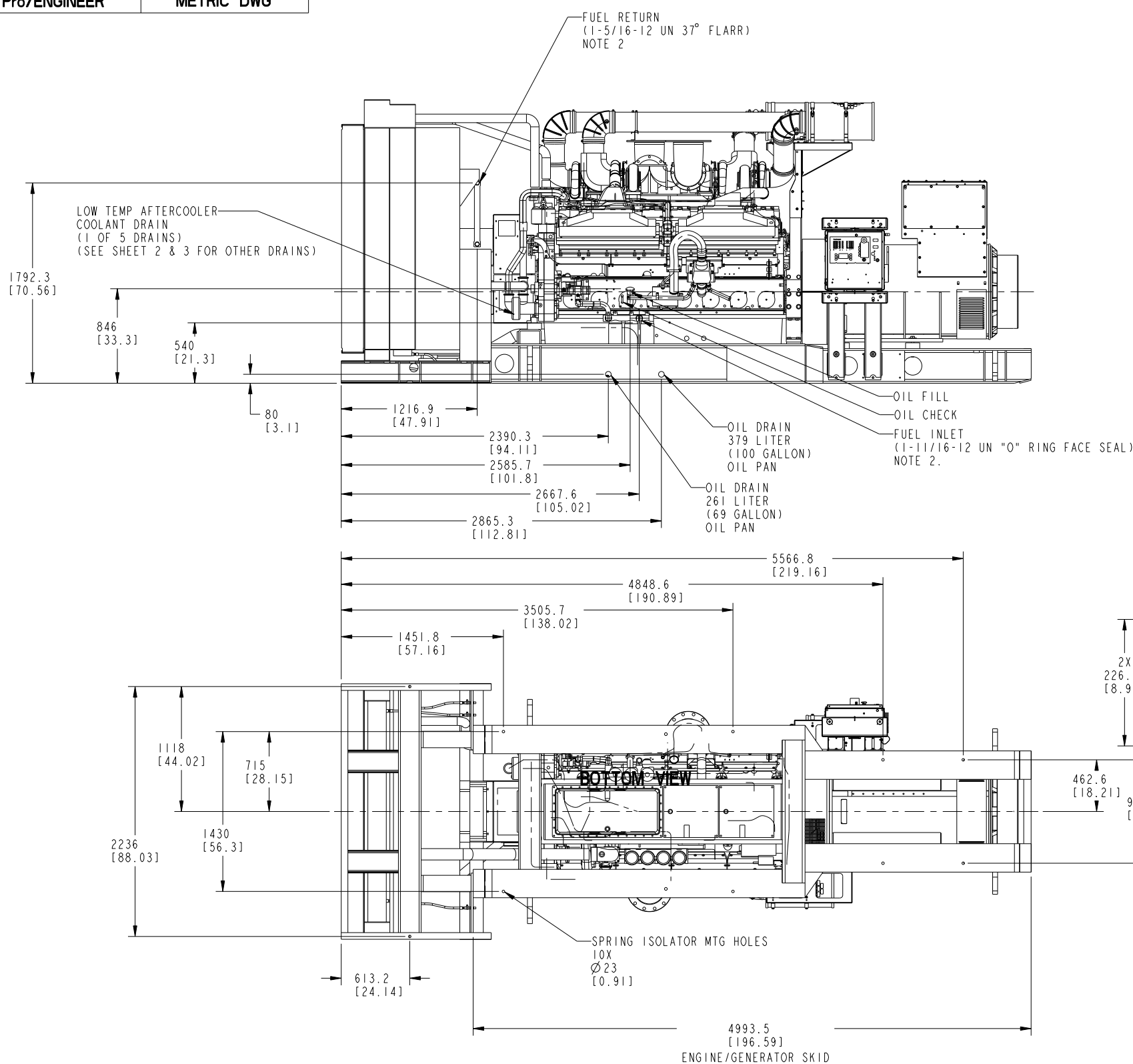
H608

RADIATOR COOLED

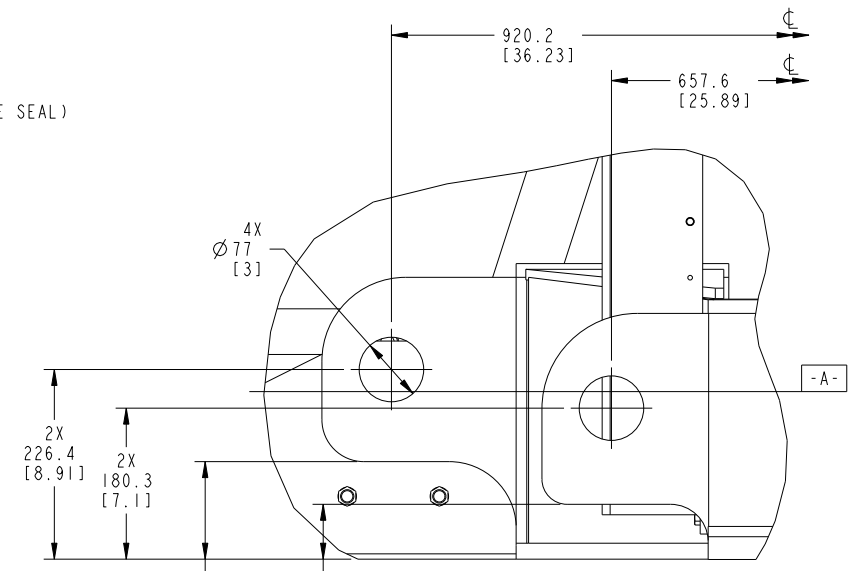
TABULATION	
GEN STYLE	DIM "A"
P7	1314.4 [51.75]
P80	1073.7 [42.27]

DO NOT SCALE PRINT		TOLERANCE UNLESS OTHERWISE SPECIFIED		DIM TO		ITEM PART NO		DESCRIPTION OR MATERIAL		REV DES	
mm	Inch	mm	Inch	mm	Inch	NO	NAME	DATE	DATE	DATE	DATE
X ± 3	.X ±	0.05 - 4.99	+0.15/-0.00	004-200	1.000/-0.003	DR	M.T.ABEL	01-15-04	01-15-04	01-15-04	01-15-04
.X ± 0.8	.XX ±	5.00 - 9.99	+0.20/-0.10	201-421	1.000/-0.004	CHKD	B.HENNING	01-15-04	01-15-04	01-15-04	01-15-04
.XX ± 0.38	.XXX ±	10.00 - 17.49	+0.25/-0.13	422-103	1.010/-0.005	APPROVED	B.HENNING	01-15-04	01-15-04	01-15-04	01-15-04
		17.50 - 24.99	+0.30/-0.13	704-999	1.012/-0.005	MODEL FIRST USED ON		DOKB, KC, KD		SITE CODE	
ANG TOL: 1.0 °		SCALE OF 3/64		THIS DOCUMENT IS THE PROPERTY OF CUMMINS POWER GENERATION. IT CONTAINS PROPRIETARY AND CONFIDENTIAL INFORMATION WHICH MUST NOT BE DISCLOSED, USED OR REPRODUCED WITHOUT EXPRESSLY AUTHORIZED BY CUMMINS POWER GENERATION OR ITS REPRESENTATIVE.		FOR INTERPRETATION OF DIMENSIONS AND TOLERANCING, SEE ANSI Y14.5M-1992		CUMMINS POWER GENERATION 1400 73RD AVE NE MINNEAPOLIS, MINNESOTA 55432		TITLE GENSET_OUTLINE	
						PGA		0500_3947		SHEET 3 OF 8 DWG FILE D	

REL NO	LTR	NO	REVISION	ZONE	DR	CHKD	APPROVED	DATE
ECO-104057	D	--	----	-	AL	DPAP	VAIDYA	25FEB09



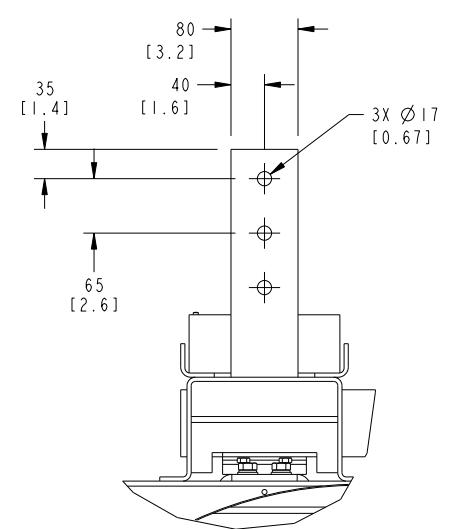
NOTE:
 1. DIMENSIONS SHOWN IN [] BRACKETS ARE INCHES.
 2. FUEL INLET HOSE Ø22.2 [Ø.88] X 1300 [51.2] LONG WITH 1-11-1/2 NPTF EXTERNAL FITTING.
 FUEL OUTLET HOSE Ø22.2 [Ø.88] X 2642 [104] LONG WITH 1-11-1/2 NPTF EXTERNAL FITTING.



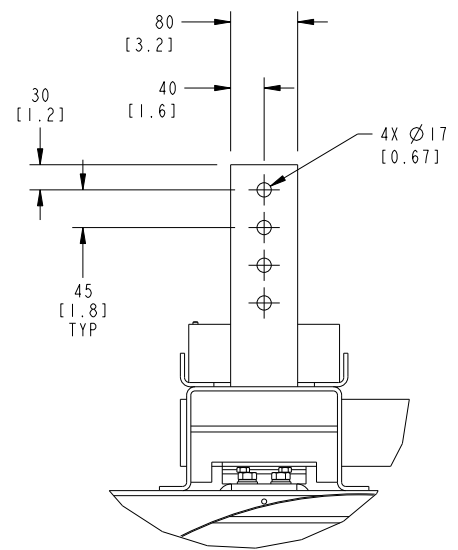
RADIATOR COOLED

TOLERANCE UNLESS OTHERWISE SPECIFIED		DIM TO	ITEM	PART NO	QTY	DESCRIPTION OR MATERIAL	REV	
mm	Inch							NO
0.00	± 0.00	XXX±	DR	M.T.ABEL		01-15-04	CUMMINS POWER GENERATION 1400 73RD AVE NE MINNEAPOLIS, MINNESOTA 55432	
0.00	± 0.00	XXX±	CHKD	B.HENNING		01-15-04		TITLE: GENSET_OUTLINE SITE CODE: PGA DWG NO: 0500_3947 SHEET: 4 OF 8 DWG DATE: 01-15-04
0.00	± 0.00	XXX±	APPROVED	B.HENNING		01-15-04		
DO NOT SCALE PRINT ANG TOL: 1.0 DRAWN TO SCALE OF 3/64		THIS DOCUMENT IS THE PROPERTY OF CUMMINS POWER GENERATION. IT CONTAINS PROPRIETARY AND CONFIDENTIAL INFORMATION WHICH MUST NOT BE REPRODUCED, COPIED, OR DISCLOSED WITHOUT EXPRESSLY AUTHORIZED BY CUMMINS POWER GENERATION OR ITS REPRESENTATIVE.	THIRD ANGLE PROJECTION 	MODEL FIRST USED ON: DOKB, KC, KD				

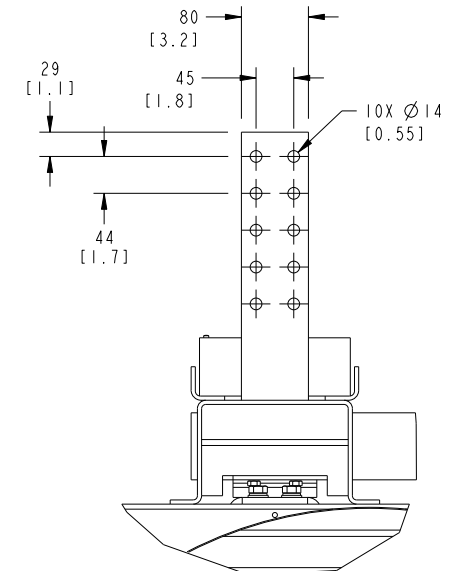
REL NO	LTR	NO	REVISION	ZONE	DR	CHKD	APPROVED	DATE
ECO-104057	D	--	----	-	AL	DPAP	P.VAIDYA	25FEB09



DETAIL A
SCALE 1/4

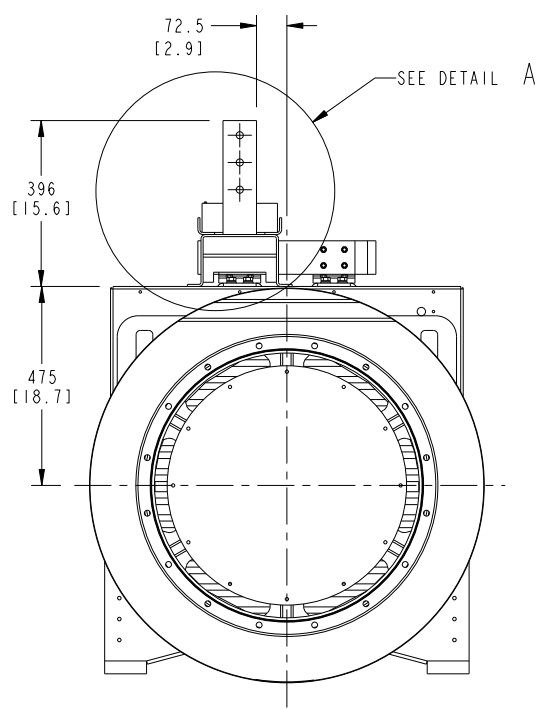
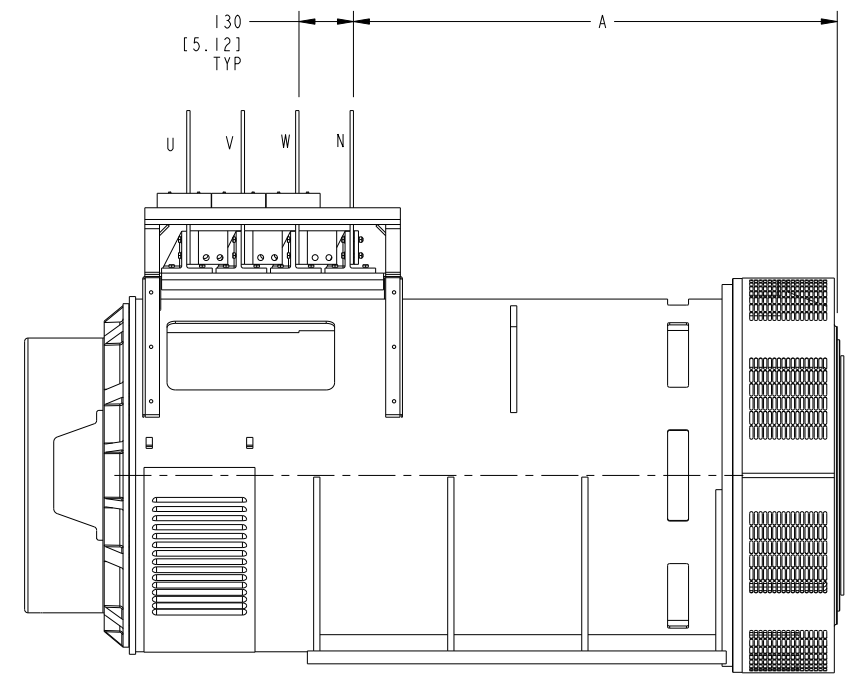


DETAIL B
SCALE 1/4

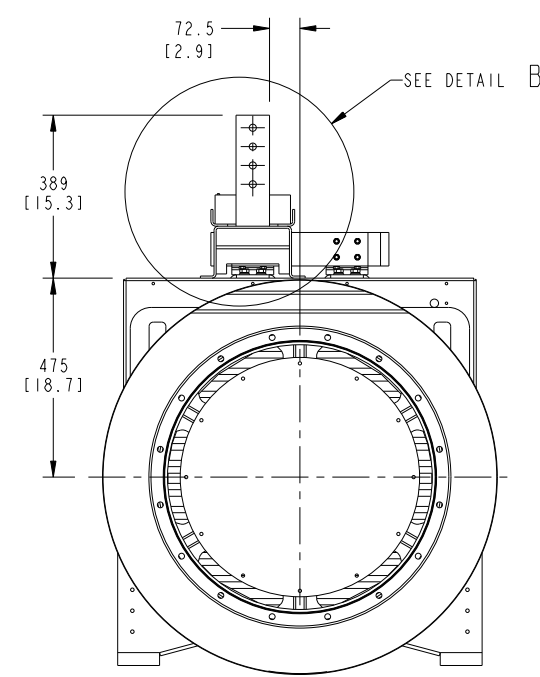


DETAIL C
SCALE 1/4

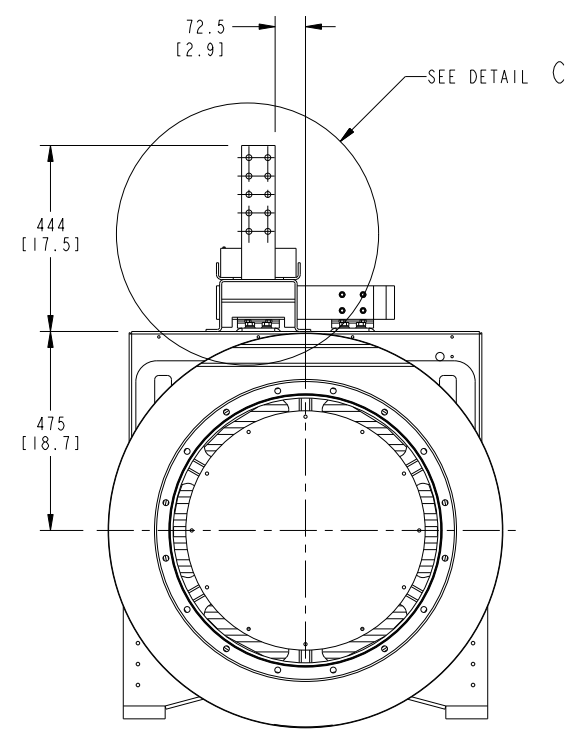
NOTE:
1. EACH 2 HOLE, NEMA TERMINAL WILL ACCOMMODATE UP TO 10 750 MCM LUGS.
2. DIMENSIONS SHOWN IN [] ARE INCHES.



1 HOLE LUG
NEWAGE
CORES B THRU F
(KR79)



1 HOLE LUG
NEWAGE
CORE G
(KR79)



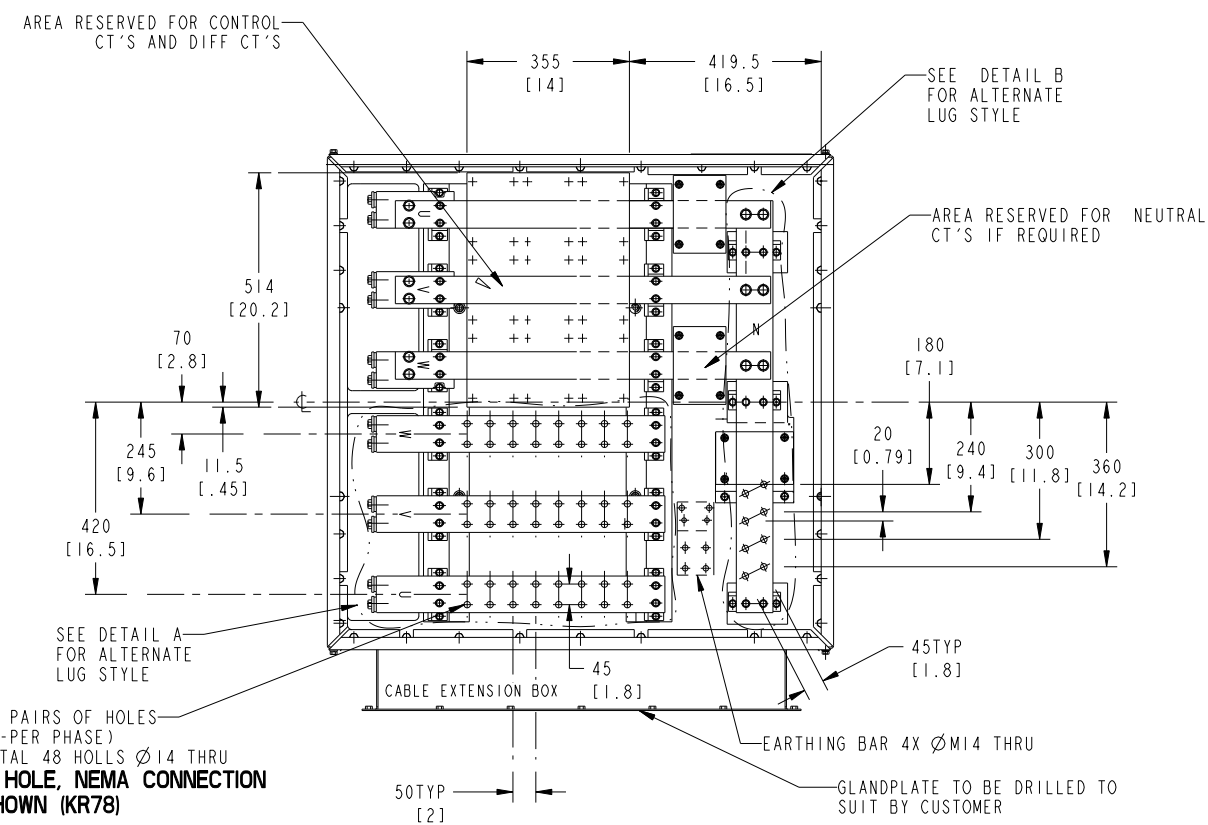
2 HOLE LUG, NEMA
CORES B THRU G
(KR78)

TABULATION	
CORE	DIM A
B	919
C	919
D	1069
E	1069
F	1154
G	1154

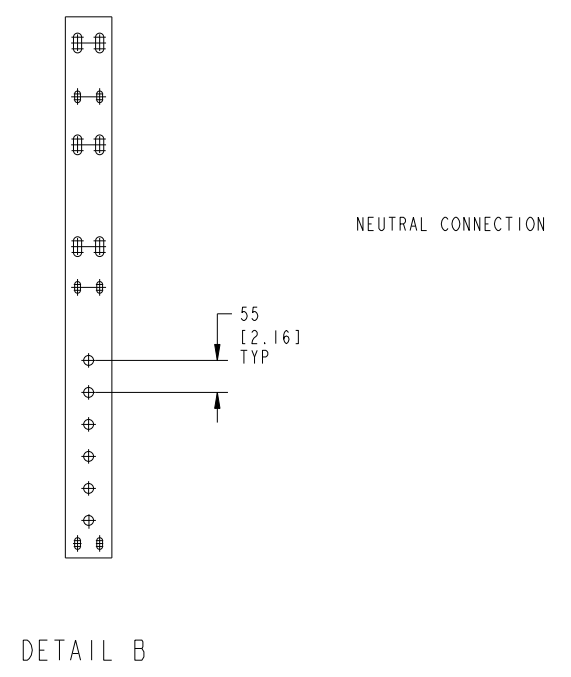
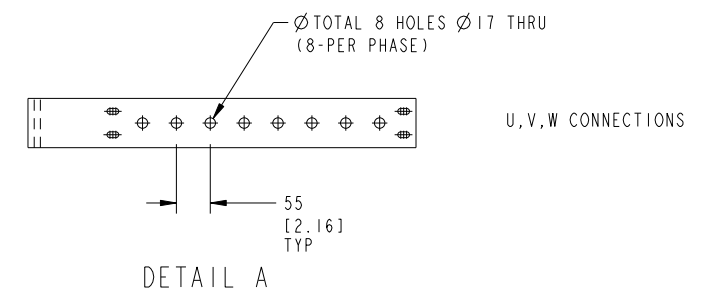
P7 ALTERNATOR
ELECTRICAL CONNECTION DETAIL
(OUTPUT BOX NOT SHOWN)

TOLERANCE UNLESS OTHERWISE SPECIFIED		DIM TO	ITEM	PART NO	QTY	DESCRIPTION OR MATERIAL	REV
mm	Inch						
0.00 - 4.99	+0.15/-0.00	XXX	DR	M.T.ABEL	01-15-04	CUMMINS POWER GENERATION 1400 73RD AVE NE MINNEAPOLIS, MINNESOTA 55432	
5.00 - 9.99	+0.20/-0.10	XXX	CHKD	B.HENNING	01-15-04		TITLE: GENSET_OUTLINE SITE CODE:
10.00 - 17.49	+0.25/-0.13	XXX	APPROVED	B.HENNING	01-15-04		MODEL FIRST USED ON: DQKB, KC, KD SHEET 5 OF 8
17.50 - 24.99	+0.30/-0.13	XXX	DATE	01-15-04	0500_3947	DRAWN TO: 3/4 SCALE OF:	

REL NO	LTR	NO	REVISION	ZONE	DR	CHKD	APPROVED	DATE
ECO-104057	D	--	----	-	AL	DPAP	P.VAIDYA	25FEB09



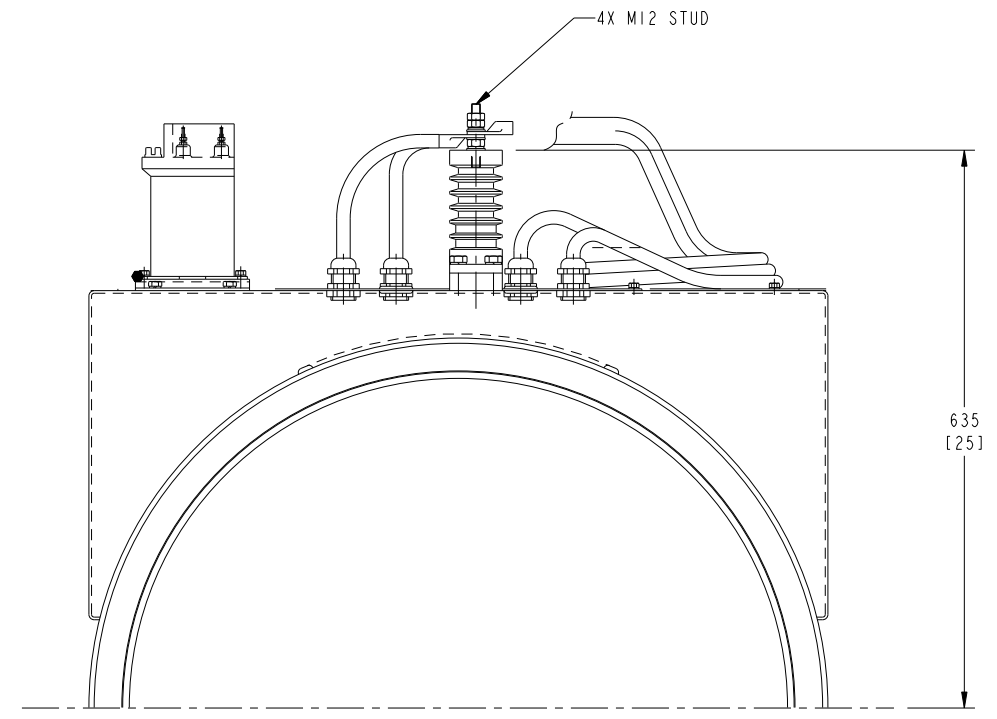
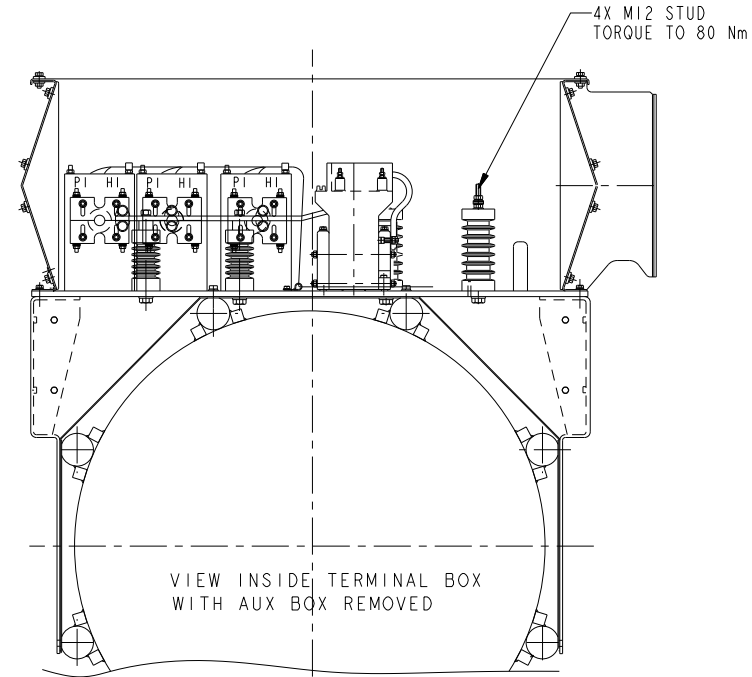
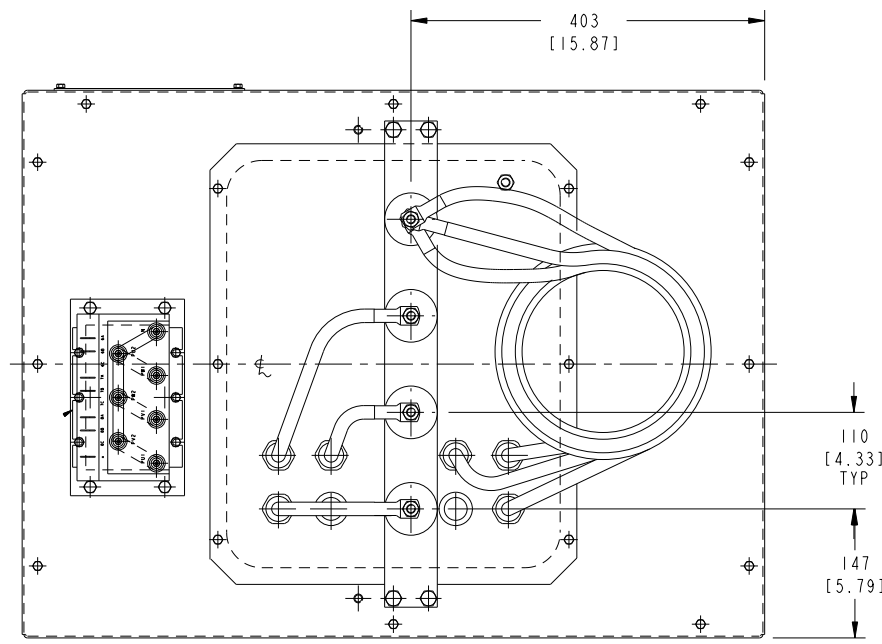
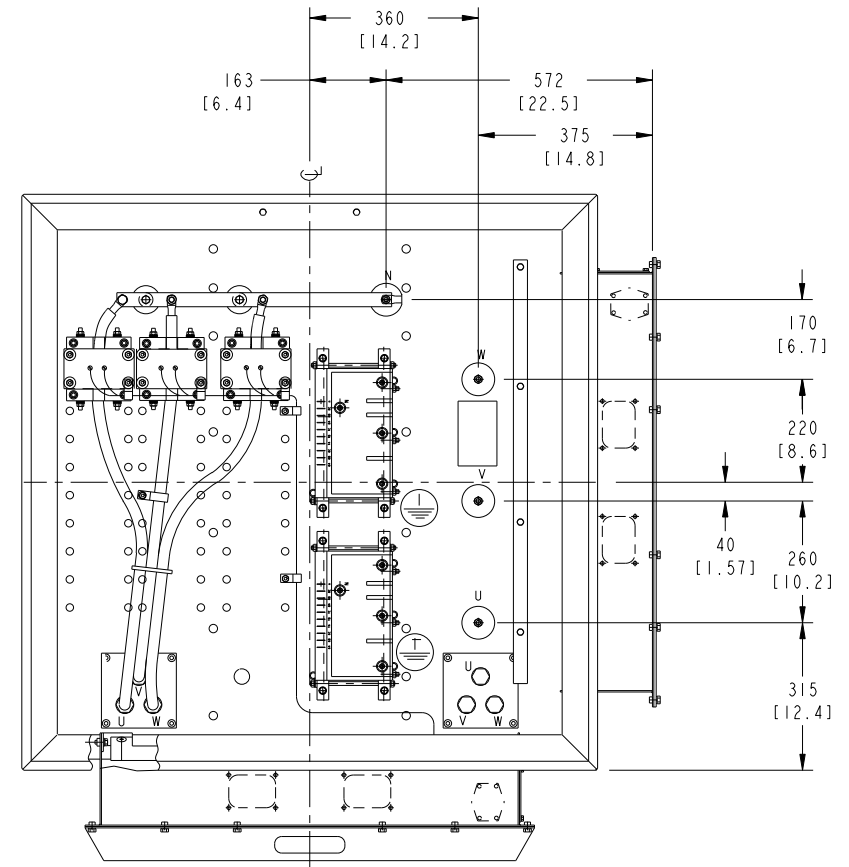
**ALTERNATE OUTPUT CONNECTION
NEWAGE 1 HOLE LUG
(KR79)**



LVSI 804 ALTERNATOR
(P80)

TOLERANCE UNLESS OTHERWISE SPECIFIED		DIM TO	ITEM	PART NO	QTY	DESCRIPTION OR MATERIAL	REV	
mm	Inch							DATE
DO NOT SCALE PRINT	X ± 3 X ± 0.8 .XX ± 0.38	.X ± .XX ±	DR	M.T.ABEL		01-15-04	<p>CUMMINS POWER GENERATION 1400 73RD AVE NE MINNEAPOLIS, MINNESOTA 55432</p>	
ANG TOL: 1.0 °	0.09-4.99 +0.15/-0.00 5.00-9.99 +0.20/-0.10 10.00-17.49 +0.25/-0.13 17.50-24.99 +0.30/-0.13	004-200 201-421 422-103 704-999	CHKD	B.HENNING		01-15-04		<p>MODEL FIRST USED ON</p> <p>FOR INTERPRETATION OF DIMENSIONS AND TOLERANCING, SEE MODEL FIRST USED ON</p> <p>APPROVED B.HENNING</p> <p>DOKB, KC, KD</p>
SCALE OF 3/64	1.001-303 1.000/-004 1.010/-005 1.012/-005		MFG	B.HENNING		01-15-04		

REL NO	LTR	NO	REVISION	ZONE	DR	CHKD	APPROVED	DATE
ECO-104057	D	--	----	-	AL	DPAP	P.VAIDYA	25FEB09



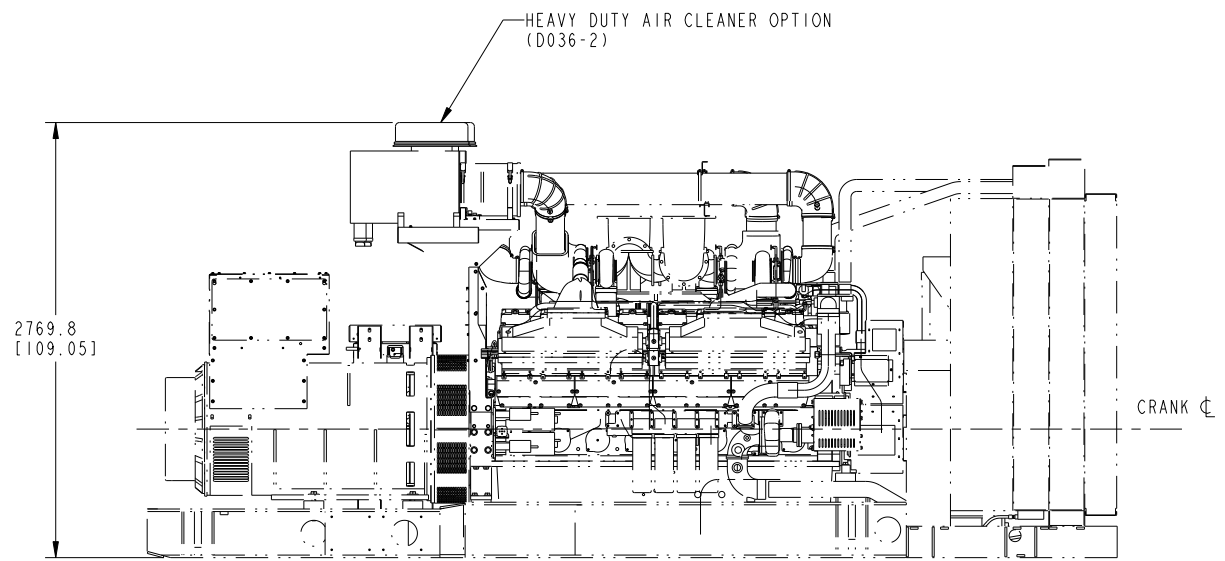
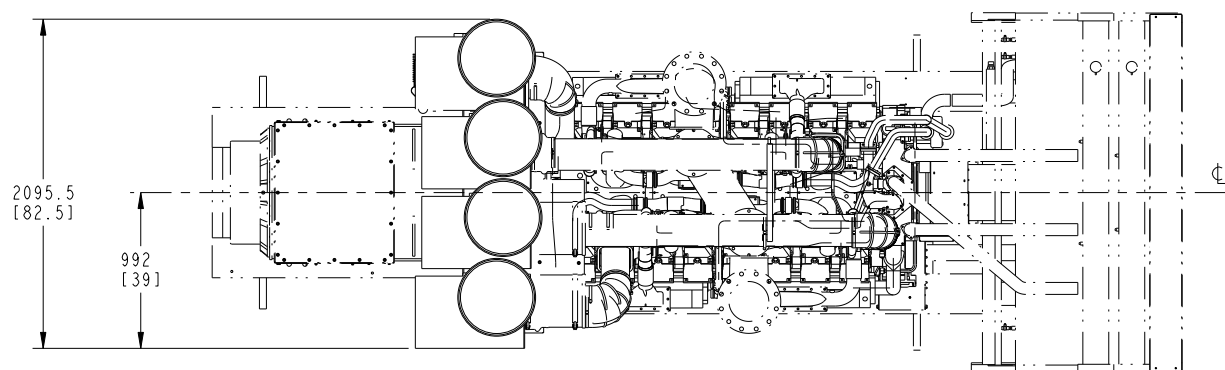
MV7 ALTERNATOR

MV/HVSI 804 ALTERNATOR

DO NOT SCALE PRINT		TOLERANCE UNLESS OTHERWISE SPECIFIED		DIM TO		ITEM PART NO		DESCRIPTION OR MATERIAL		REV DES	
		mm	Inch								
		X ± 3	.X ±	COPIED FROM		NAME		DATE		CUMMINS POWER GENERATION	
		.X ± 0.8	.XX ±	THIRD ANGLE PROJECTION		DR M.T.ABEL		01-15-04		1400 73RD AVE NE MINNEAPOLIS, MINNESOTA 55432	
		.XX ± 0.38	.XXX ±			CHKD B.HENNING		01-15-04		TITLE GENSET_OUTLINE	
		0.09 - 0.99 +0.15/-0.06	004 - 200 +.006/-0.03			MFG B.HENNING		01-15-04		SITE CODE	
ANG TOL: 1.0 °		5.00 - 9.99 +0.20/-0.10	201 - 421 +.008/-0.04			APPROVED B.HENNING		01-15-04		PGA	
DRAWN TO SCALE OF 3/64		10.00 - 17.49 +0.25/-0.13	422 - 103 +.010/-0.05			MODEL FIRST USED ON		DQKB, KC, KD		DWG NO 0500_3947	
		17.50 - 24.99 +0.30/-0.13	704 - 999 +.012/-0.05			TOLERANCING, SEE				SHEET 7 OF 8	
						TYP. 1/4, 3/8, 1/2				D	

0500_3947 D Pro/ENGINEER METRIC DWG

REL NO	LTR	NO	REVISION	ZONE	DR	CHKD	APPROVED	DATE
ECO-104057	D	1	ADD SHEET 8	-	AL	DPAP	P.VAIDYA	25FEB09



TOLERANCE UNLESS OTHERWISE SPECIFIED		DIM TO	ITEM	PART NO	QTY	DESCRIPTION OR MATERIAL	REV	
mm	Inch							NAME
X ± 3	.X ±	THIRD ANGLE PROJECTION		DR	M.T.ABEL	01-15-04	CUMMINS POWER GENERATION 1400 73RD AVE NE MINNEAPOLIS, MINNESOTA 55432	
.X ± 0.0	.XX ±			CHKD	B.HENNING	01-15-04		TITLE GENSET_OUTLINE
.XX ± 0.38	.XXX ±			MFG	B.HENNING	01-15-04		
0.00-4.99 +0.15/-0.00	004-200 +.006/-0.03	APPROVED	B.HENNING	01-15-04	MODEL FIRST USED ON	SHEET 8 of 8		
5.00-9.99 +0.20/-0.10	201-421 +.008/-0.04	<small>THIS DOCUMENT IS THE PROPERTY OF CUMMINS POWER GENERATION. IT CONTAINS PROPRIETARY AND CONFIDENTIAL INFORMATION WHICH MUST NOT BE REPRODUCED, COPIED, OR DISCLOSED WITHOUT EXPRESSLY AUTHORIZED BY CUMMINS POWER GENERATION OR ITS REPRESENTATIVE.</small>		TOLERANCING, SEE 2 AND 3, Y.P.A. 04-1-1982	DOKB, KC, KD	DWG NO. 0500_3947		
10.00-17.49 +0.25/-0.13	.422-.703 +.010/-0.05	DRAWN TO SCALE OF 3/64		PGA	0500_3947	D		
17.50-24.99 +0.30/-0.13	.704-.999 +.012/-0.05							

Part A002X182 D

Description	Legacy Name	External Regulations	Application Status	Release Phase Code	Security Classification	Alternates
OUTLINE,GENSET	0500-3947	None	Production & Service	Production	Proprietary	

Part Specifications :A002X182 D

Name	Description	Legacy Name
A013X768	DRAWING,INSTALLATION	0500-3947